



NEWSLETTER - DECEMBER 07

Wishing all our customers a Merry Christmas and Happy New Year. Thank you for your continued support as we look forward to a productive and challenging 2008. Our office will be closed on Monday 24th and Monday 31st December and Statutory Holidays. We will be open on the days in between and engineers are available on their cellphones for statutory holidays in the event of an emergency. This year has seen A&E introduce a lot of new products along with investment in R&D and offshore development with the establishment of an office in the USA.

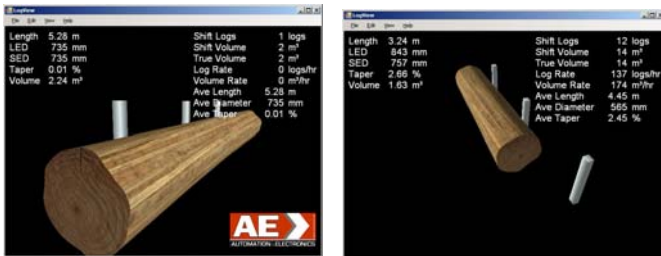
Our investment in high level programmers who have extensive experience with 3D animation, Database design and Sawmill optimization and control will ensure A&E stays at the leading edge of new technologies. Whilst traditionally we have supported Allen Bradley equipment we also now have four in-house engineers trained to support Siemens S7 series PLC's.



BALSA BOOMS IN PNG – Richard Baker from A&E recently commissioned a new sawmill line at PNG Balsa in Papua New Guinea. The line was manufactured by AE Gibson Engineering from Australia and comprises of a Gibson twin circular and multisaw. Logs are scanned at the primary and controlled through the line using Allen Bradley SLC500 controls combined with Delta servo positioning. The product is used extensively in the modelling, wind turbine and super yacht industries.



LOOK WE SEE 3D!



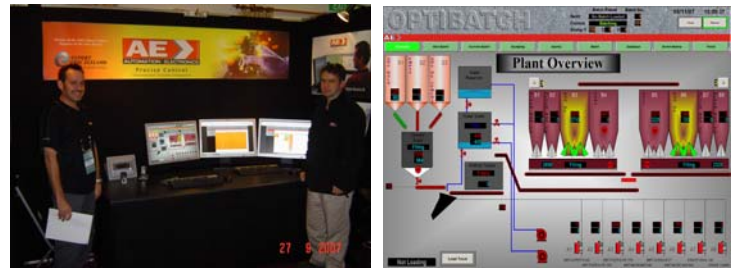
A&E offer a wide range of 3D solutions. This system is about to be installed on a Log Carriage in Victoria Australia for log profile and volume scanning. We are profiling using Laser scanners from JoeScan USA.



A&E IN USA
Currently we are working on PLC automation of a Bundle cut line in the Weyerhaeuser Natchitoches where we are contracted via WPS Industries.
SEE US AT THE PORTLAND SHOW

Above : Company Directors Brian Smith & Rainer Ansoerge on the cotton fields of Louisiana

OPTIBATCH - Concrete Batching System



Above : Daniel Rice & Paul Henstock Launch Optibatch

A&E recently released our new hi tech concrete batching software at the concrete manufacturers association recently held in Taupo. SupaCrete in Tauranga are the first company to deploy the Optibatch system over three sites.

Optibatch is a modular solution, based upon two main components. **Optibatch Enterprise**: Which manages customers, products, pricing orders, scheduling, fleet management and **Optibatch Control** which automates the batching process to include the handling, weighing and delivery of both aggregate and cement, and also water metering.

Optibatch is based on Microsoft SQL database with a web based front end interface allowing access via VPN /SSL.

For enquires contact:
Automation & Electronics NZ Ltd
Phone NZ : + 64 7 574 6223
USA Office: + 1 318 247 8918

Email: sales@automatonelec.com

Rockwell Automation

System Integrator



New Zealand





—

n

.

—

—